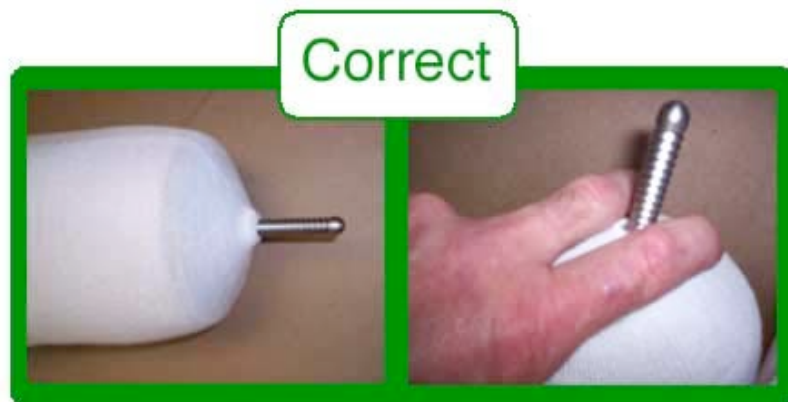


Properly Applying Stump Socks over Shuttle Locking Pins Systems – Instructions



- Adding socks is essential to maintaining a proper fit in your prosthesis.
- Applying socks improperly over a pin can jam the lock and make removing the prosthesis difficult.
- Check regularly that the pin is securely installed.
- It should not be loose or easily removed.
- Visually check that there are no foreign objects in the socket.

- When applying socks make sure the pin is uncovered.
- Just a few threads can jam the pin in the lock.
- Remove any loose threads with scissors
- If it is difficult to see the pin, reach down and feel the pin to make sure it is exposed properly.
- If you are unable to determine whether the pin is free, seek assistance.
- If properly done, you will hear audible clicks as the pin engages.



If you should encounter problems, please call Cornell Orthotics & Prosthetics at 978-922-2866.